



Aug 13, 2013 - Present

# PROFESSIONAL DEVELOPMENT

# PROFESSIONAL DEVELOPMENT REPORT

ALLEGHENY IU 3

CLASSROOM

ACCESS

SKILLS

ENVIRONMENT



Progress reports that 14 hours of high quality professional development on a single topic is needed before the classroom is impacted to a statistically significant degree.

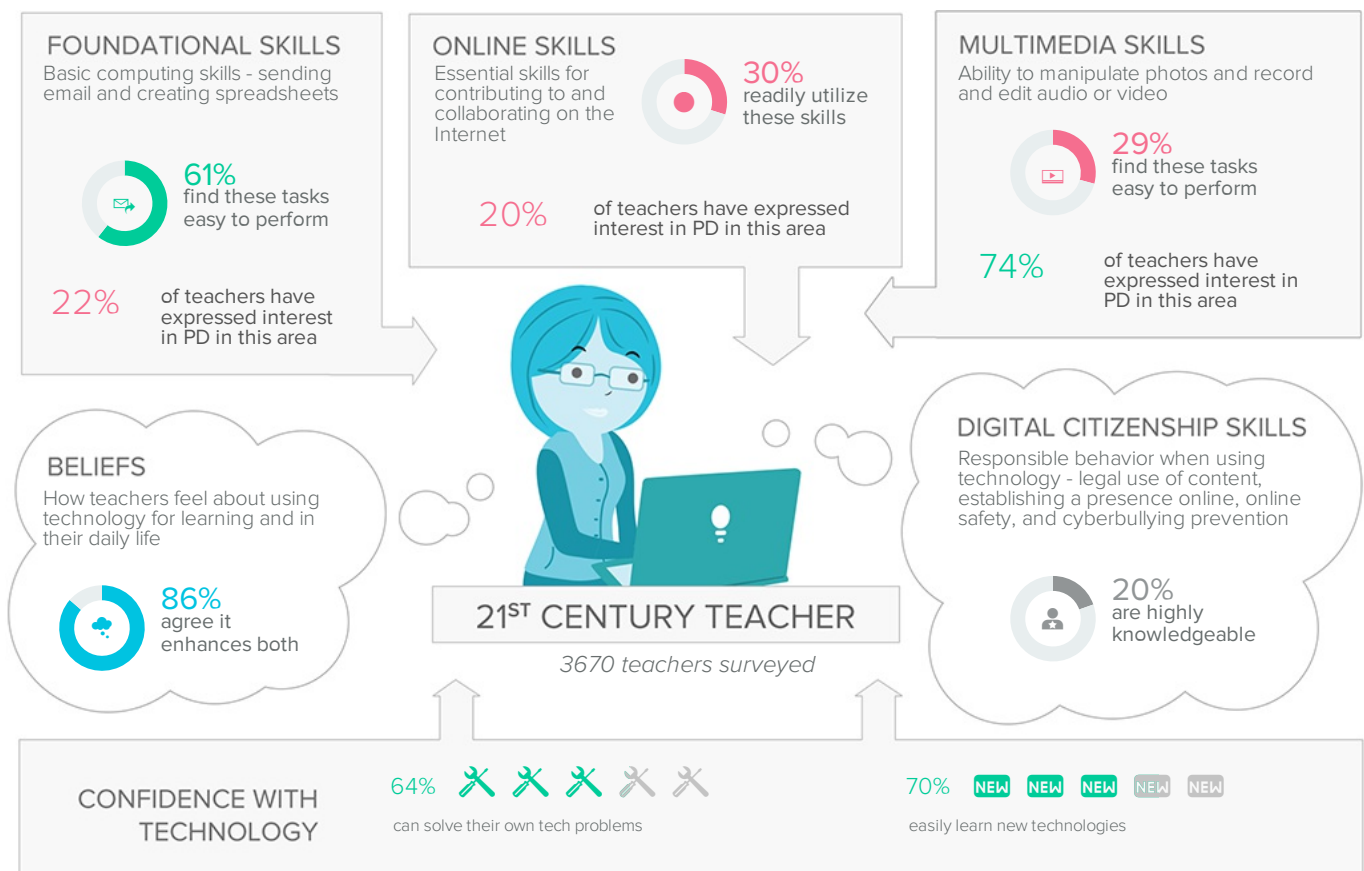
Effective professional development for teachers can have an enormous impact on teaching and learning in an organization. However, professional development experiences for teachers must be sustained and of high quality for improved learning outcomes to be realized.

Specifically, the *Center for American Progress* reports that 14 hours of high quality professional development on a single topic is needed before the classroom is impacted to a statistically significant degree. However, CASE data collected from hundreds of schools indicates that 80% of teachers report less than 17 hours of school-sponsored professional development around technology in the last 12 months.

Research from the International Society of Technology Education (ISTE) also reveals that high quality professional development is job-embedded, personalized, and designed to promote skill transfer. Professional learning experiences must respond to teachers' interests, needs, and classroom settings. In many cases, these types of learning experiences can extend beyond the traditional school in-service setting to include webinars, Twitter chats, and other virtual experiences.

This type of dynamic instruction helps both teachers and students alike. A *Walden University* study reports that teachers who use technology frequently place the highest emphasis on using technology to promote problem-solving, critical thinking, and communication.

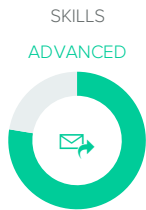
Being aware of teachers' skill profiles and interests with technology can greatly inform the development of a cohesive, integrated professional development plan that will enhance student learning outcomes.



Contributing Factors

The factors that most contribute to the success of your organization include ...

TEACHER FOUNDATIONAL



Historical data will appear here once you have collected year-over-year data.

TEACHER ONLINE SKILLS



Historical data will appear here once you have collected year-over-year data.

TEACHER MULTIMEDIA



Historical data will appear here once you have collected year-over-year data.

TEACHER BELIEFS



Historical data will appear here once you have collected year-over-year data.

CASE™ Score Legend

● Beginning

● Emerging

900-999

● Proficient

1000-1099

● Advanced

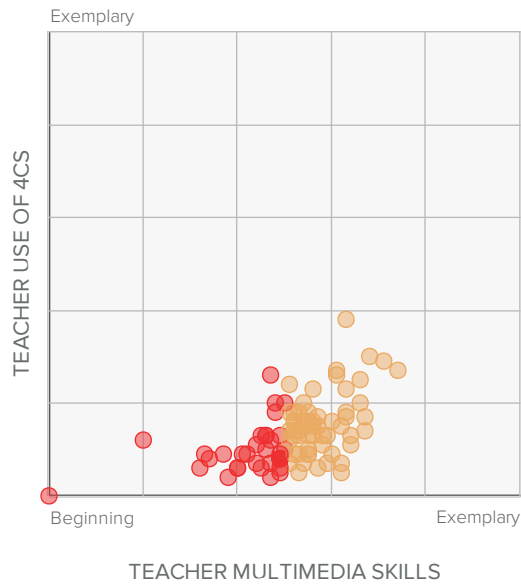
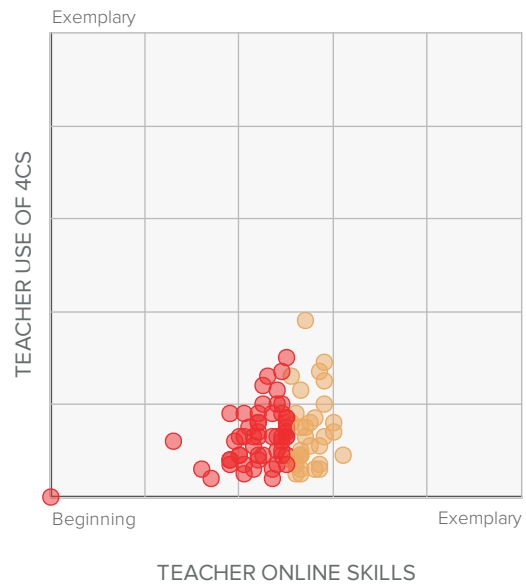
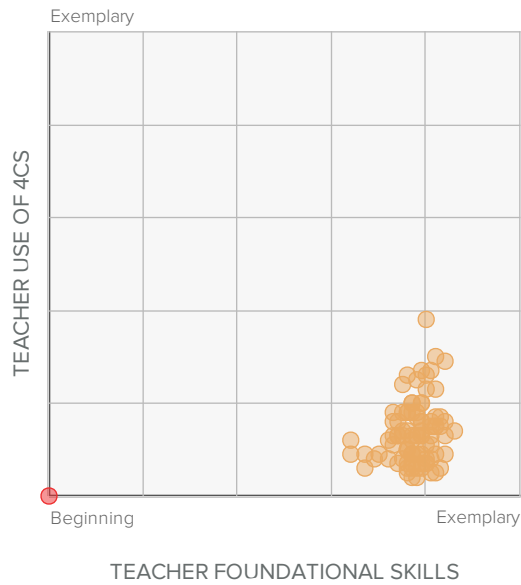
1100-1199

● Exemplary

1200-1300

## Scatterplots

SKILLS



CASE™ Score Legend

● **Beginning**  
800-899

● **Emerging**  
900-999

● **Proficient**  
1000-1099

● **Advanced**  
1100-1199

● **Exemplary**  
1200-1300

# PROFESSIONAL DEVELOPMENT REPORT

## ALLEGHENY IU 3

CLASSROOM  
ACCESS  
SKILLS  
ENVIRONMENT

### SCHOOL SCORECARD

	Foundational Skills	Online Skills	Multimedia Skills	Beliefs
Allegheny Valley Sd				
Acmetonia Primary School	●	●	●	●
Colfax Upper El School	●	●	●	●
Springdale Jshs	●	●	●	●
Avonworth Sd				
Avonworth Elementary School	●	●	●	●
Avonworth High School	●	●	●	●
Avonworth Middle School	●	●	●	●
Bethel Park Sd				
Abraham Lincoln Elementary School	●	●	●	●
Benjamin Franklin Elementary School	●	●	●	●
Bethel Memorial Elementary School	●	●	●	●
Bethel Park High School	●	●	●	●
George Washington Elementary School	●	●	●	●
Independence Middle School	●	●	●	●
Neil Armstrong 5 6 Middle School	●	●	●	●
Brentwood Borough Sd				
Brentwood Ms	●	●	●	●
Brentwood Shs	●	●	●	●
Elroy Ave. Elementary School	●	●	●	●
Moore School	●	●	●	●
Chartiers Valley Sd				
Chartiers Valley Hs	●	●	●	●
Chartiers Valley Intrmd School	●	●	●	●
Chartiers Valley Ms	●	●	●	●

Clairton City Sd				
Clairton El School	●	●	●	●
Clairton Ms/Hs	●	●	●	●
Elizabeth Forward Sd				
Central Elementary	●	●	●	●
Elizabeth Forward Middle	●	●	●	●
Mt. Vernon Elementary	●	●	●	●
William Penn Elementary	●	●	●	●
Gateway Sd				
Dr. Cleveland Steward Jr. Elementary	●	●	●	●
Evergreen Elementary	●	●	●	●
Gateway Middle	●	●	●	●
Gateway Senior High	●	●	●	●
Moss Side Middle	●	●	●	●
Ramsey Elementary	●	●	●	●
University Elementary	●	●	●	●
Hampton Township Sd				
Central El School	●	●	●	●
Hampton Hs	●	●	●	●
Hampton Ms	●	●	●	●
Poff El School	●	●	●	●
Wyland El School	●	●	●	●
North Allegheny Sd				
Bradford Woods Elementary	●	●	●	●
Carson Middle	●	●	●	●
Franklin Elementary	●	●	●	●
Hosack Elementary	●	●	●	●
Ingomar Elementary	●	●	●	●
Ingomar Middle	●	●	●	●
Marshall Elementary	●	●	●	●
Marshall Middle	●	●	●	●
Mc Knight Elementary	●	●	●	●
North Allegheny lhs	●	●	●	●
North Allegheny Shs	●	●	●	●

Peebles Elementary				
Penn Hills Sd				
Forbes Elementary				
Linton Middle				
Penn Hebron Elementary				
Penn Hills Shs				
Washington Elementary				
Pine Richland Sd				
Eden Hall Upper El School				
Hance El School				
Pine Richland Hs				
Pine Richland Ms				
Richland El School				
Wexford El School				
Plum Borough Sd				
Center Elementary School				
Holiday Park Elementary				
Oblock Junior High School				
Pivik Elementary				
Plum Senior High				
Regency Park Elementary				
Stevenson Elementary				
Quaker Valley Sd				
Edgeworth Elementary				
Osborne Elementary				
Quaker Valley High				
Quaker Valley Middle				
South Fayette Township Sd				
South Fayette Middle				
West Allegheny Sd				
Donaldson Elementary				
Mckee Elementary				
West Allegheny High				

West Allegheny Middle	●	●	●	●
Wilson Elementary	●	●	●	●
West Jefferson Hills Sd				
Gill Hall Elementary School	●	●	●	●
Jefferson Elementary School	●	●	●	●
Mc Clellan Elementary School	●	●	●	●
Pleasant Hills Middle School	●	●	●	●
Thomas Jefferson High School	●	●	●	●
Woodland Hills Sd				
Dickson Elementary	●	●	●	●
Edgewood Elementary	●	●	●	●
Fairless Elementary	●	●	●	●
Shaffer Elementary	●	●	●	●
Wilkins Elementary	●	●	●	●
Woodland Hills Academy	●	●	●	●
Woodland Hills Junior High	●	●	●	●
Woodland Hills Senior High	●	●	●	●

CASE™ Score Legend

● **Beginning**

800-899

● **Emerging**

900-999

● **Proficient**

1000-1099

● **Advanced**

1100-1199

● **Exemplary**

1200-1300

Aug 13, 2013 - Present